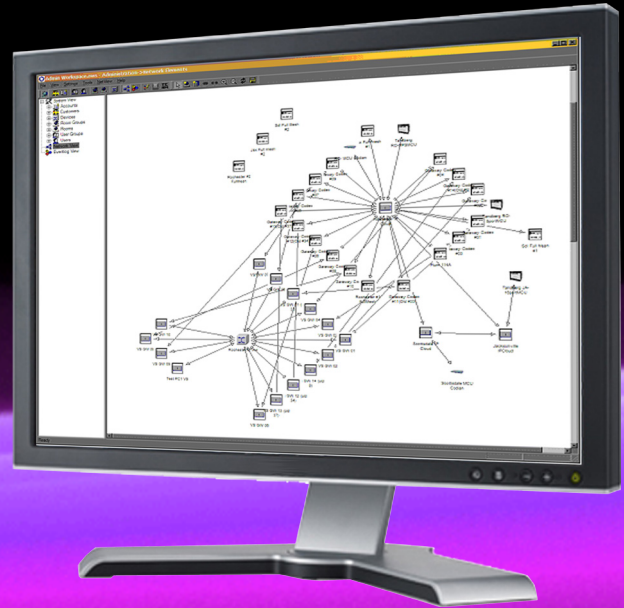


# TCReliance™

## Video Network Management Software



- **Service Oriented Architecture** – TC Reliance’s architectural style allows the interoperability of video network management services (e.g. scheduling, billing, notification, troubleshooting, network resource management, and network control.)
- **Hardware neutrality** facilitates upgrades of equipment based on features, not manufacturer, eliminating costly upgrades
- **Significantly improves video network performance and utilization**
- **TC Reliance is proven to reduce the cost of managing large video networks**
- **Facilitates the merging of desktop and conference room endpoints in both a scheduled and ad hoc environment by providing true bandwidth management with Freeport’s Elastic Gatekeeper®**
- **Facilitates priority connections across the enterprise based on function and/or the individual using Freeport’s Elastic Gatekeeper®**
- **Remote Facilitation** – Significantly reduces on-site manpower cost by centralizing daily room support activities.

### KEY CAPABILITIES

- Enterprise Web scheduling w/ room use approval by host – prevents unauthorized use
- Real time monitoring during calls w/ direct feedback – improves call performance
- ADHOC interface tied to all managed resources – Prevents blocked scheduled calls
- Host request for conference extension – less disruptive to continuous communications
- E-mail notification to key site personnel on conference faults – improves call performance
- 24/7 monitoring/testing VTC – spots trouble before use – improves call performance
- Net Modeling – bandwidth and resource management, to ensure that resources are available when needed
- Net Modeling – provides rerouting based on fault detection, improving enterprise performance
- Net Modeling – profiles outside network configuration, improving network to network performance
- Net Modeling - load balances the network, enhancing connectivity in high traffic
- Endpoint control allows point-to-point call to be completed without using bridge resources
- Endpoint control monitors call activity to ensure any dropped calls are re-established
- Endpoint control and Net Modeling allows codec-based MCU's to be fully scheduled
- Endpoint control and management reports errors as they happen, improving call performance
- Endpoint control and management allows for firmware upgrades across the enterprise
- Integrated Service Ticketing captures problems as they are happening ensuring faster turn-around times
- Fully integrated approach ensures that new technologies are fitted into the enterprise at the systems level
- Distributed NetModel allows the network to grow without the fear of slowing the scheduling process
- MS SQL Express or Oracle Database support
- Policy and privileged based hierarchy
- Participation in Customer Advisory Board
- Elastic Gatekeeper® provides flexibility in managing bandwidth, and Gatekeepers, especially during a time of emergency
- Robust API for integrating into third party applications such as billing and diagnostics systems
- Fully automated session control with a success rate of over 99% in building and ending video sessions
- Conference automation manages ADHOC calls through the Gatekeeper, and informs the ADHOC caller if their video call cannot happen due to a lack of resources
- Video Templates increases the efficiency of adding resources and reduces the risk of improper configuration
- Manufacture-neutral software ensures deployed assets have life expectancies driven by needs not manufacture upgrade cycles
- Conference room web based interface allows originator to monitor and modify an active session real time
- Fully integrated approach ensures system performance not just component performance
- Virtual MCU and switches allows customization of network design
- Administrative capabilities have proven to lower the operating cost of managing a video network
- Client based graphical user interface for administrators of a video infrastructure
- Fully integrated approach means the customer has “One Neck to Choke” regardless of the problem

**FREEPORT**  
TECHNOLOGIES

*Building Rooms That Empower You*